

ONE UNION STREET

KINGSTON-UPON-THAMES
SURREY KT1 1RP

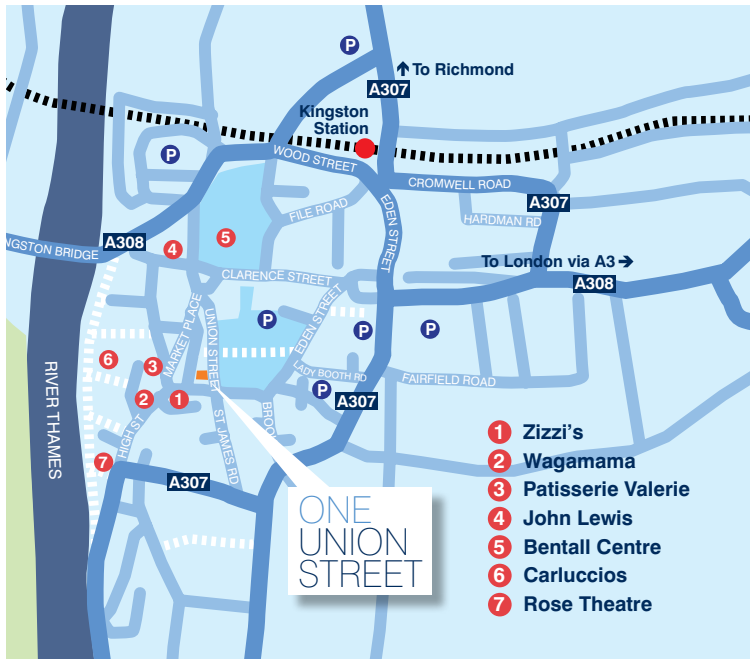


MODERN TOWN CENTRE OFFICES
2,695 – 5,920 SQ FT ONLY £10.00 PSF

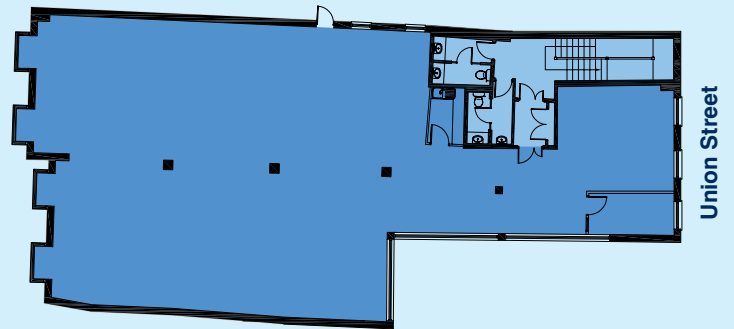
LEASES AVAILABLE FROM 1 – 5 YEARS

WWW.ONEUNIONSTREET.CO.UK





TYPICAL FLOOR PLAN



LOCATION

- In the heart of Kingston close to the restaurants, shops and amenities
- Close to the law courts
- Close to NCP Multi Storey Car Park

DESCRIPTION

- Modern three storey office building
- Available as a whole or in floors
- Ground floor entrance with display window

AMENITIES

- New refurbishment
- Large reception area
- Comfort cooling
- Perimeter trunking
- Suspended ceilings with Cat 2 lights
- Male & Female WC's on each floor

FLOOR AREAS

2nd floor offices	2,695 sq ft	(250.4 sq m)
1st floor offices	2,870 sq ft	(266.6 sq m)
Ground floor	355 sq ft	(33.0 sq m)
Total	5,920 sq ft	(550 sq m)

TERMS

Available on a Galileo Plain English Lease. This means reduced legal costs and quick occupation.

VIEWINGS

Strictly by appointment through the Sole Agents:

Andy Armiger
020 8546 2166
andy@cattaneo-commercial.co.uk

David Coleman
020 7244 4214
dcoleman@leightongoldhill.com

